

SS0100-15

INRUSH CURRENT SUPPRESSOR

INSTRUCTION MANUAL

KIKUSUI ELECTRONICS CORPORATION

TABLE OF CONTENTS

| | PAGE |
|---------------------------|------|
| 1. GENERAL | 1 |
| 1-1 GENERAL INFORMATION | 1 |
| 1-2 SPECIFICATION | 1 |
| 1-3 OUTLINE DRAWING | 3 |
| 2. OPERATION | 4 |
| 2-1 MOUNTING INSTRUCTIONS | 4 |
| 2-2 CAUTIONALY NOTES | 5 |

1. GENERAL

1-1 GENERAL INFORMATION

Model SS0100-15 is an inrush current suppressor for Kikusui PAD-L series power supplies. It suppresses inrush currents less than 100A.

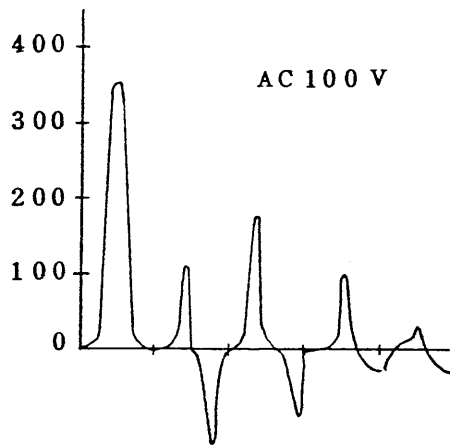
1-2 SPECIFICATION

| | |
|----------------------------------|---|
| Input Voltage | : AC 100 V \pm 10%, 50/60 Hz |
| Maximum Constant Input Current | : AC 15 A |
| Suppressed Current | : See Table 1. |
| Ambient Temperature Range | : 0 - 40 °C (32 - 104 °F) |
| Isolation Resistance | : DC 500 V, 20 M Ω or more (Between chassis and input/output terminals) |
| Dimensions | : 47.5W x 141.5H x 80D mm (1.87W x 5.57H x 3.15D in.) |
| Weight | : Approximately 470 g (1 lb) |
| Input Power Requirement | : AC 12.6 V \pm 10%, 50/60 Hz |
| Power Consumption | : Approximately 0.4 VA |
| Suitable Model for PAD-L Series: | : See Table 1. |
| Protection Circuit | : 15 A Fuse, Temp Fuse (91 °C(196 °F)) |
| Accessories | : 15 A Fuse x 1, M4-23L Spacer x 2 Cable x 3 (white/black/green) |

| SUITABLE MODEL | SUPPRESSED CURRENT |
|---|--------------------|
| PAD16-30L PAD55-10L PAD70-8L PAD110-5L PAD160-3.5L PAD250-2.5L | 100 A |
| PAD35-10L | 80 A |
| | |

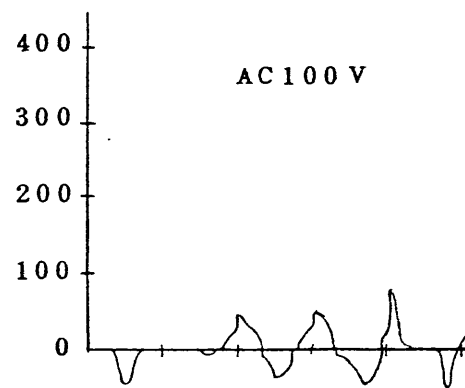
Table 1

Input
current (A)



WITHOUT SS0100-15
PAD70-8L (FULL LOAD)

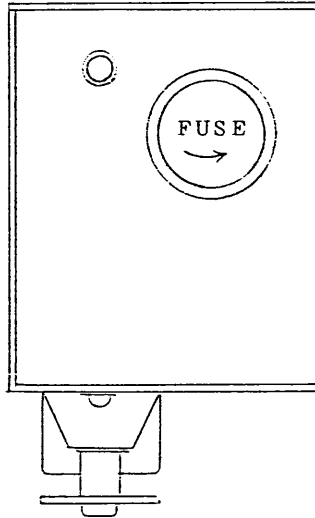
Input
current (A)



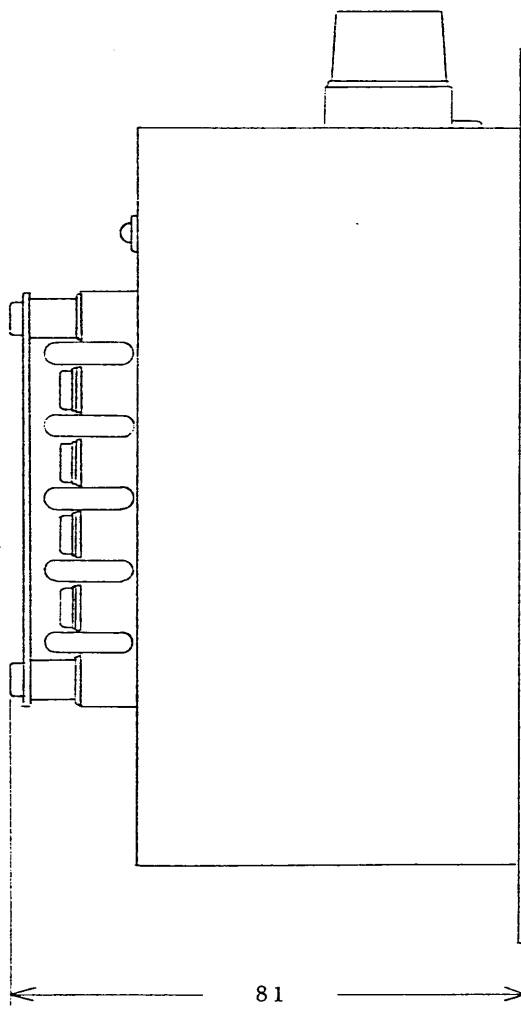
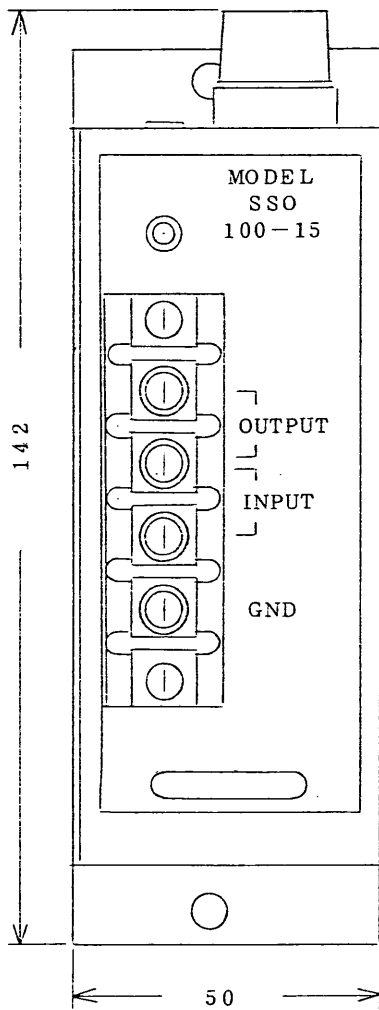
WITH SS0100-15
PAD70-8L (FULL LOAD)

Figure 1

1-3 OUTLINE DRAWING



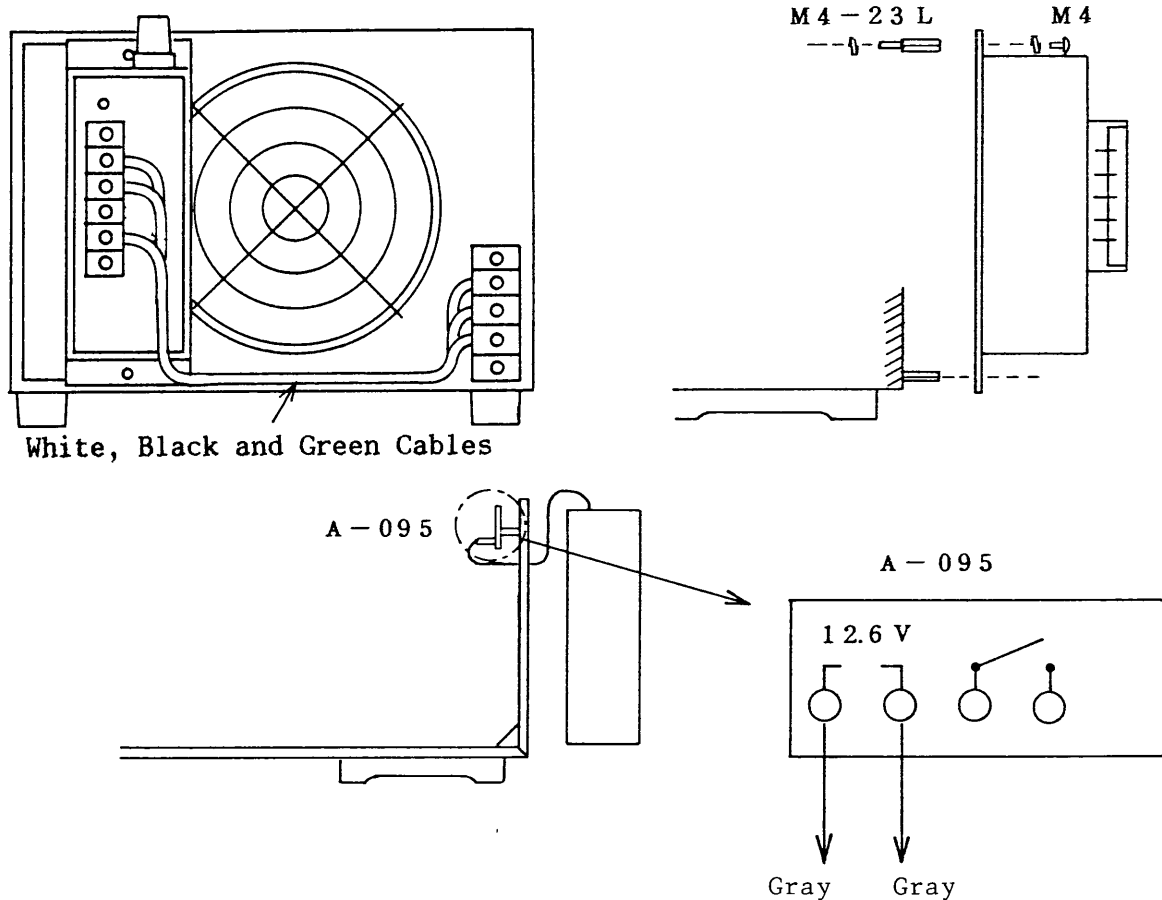
Unit: mm



2. OPERATION

2-1 MOUNTING INSTRUCTIONS

Accessoly M4-23L Spacer x 2 is required.



* Make sure to turn-off the power switch and disconnect the AC cable from the AC outlet.

1. Install the M4-23L Spacer x2 and the SS0100-15 to the back panel of the power supply.
2. Take the cover of the power supply off.
3. Connect and solder the gray cables from the SS0100-15 to the 12.6V line of the printed circuit board A-095.
4. Connect the green cable of accessories from GND terminal of the SS0100-15 to GND terminal of the power supply.
5. Connect the white cable and black cable of accessories from the output terminals of the SS0100-15 to the input terminals of the power supply.
6. Connect the AC cable to the input and GND terminals of the SS0100-15.

2-2 CAUTIONARY NOTES

Check the solder point joining the 12.6 V line of board A-095 and the gray cables from SS0100-15. If they are disconnected the inside temperature will increase and the power indicator (LED) will be off. The SS0100-15 will be protected by a temperature fuse.

Figure 3 shows the allowable characteristics for the turn-on and turn-off switch of the power supply. If the power switch is switched from on to off frequency, use a remote control function for a constant current of the power supply. (See Figure 4.)

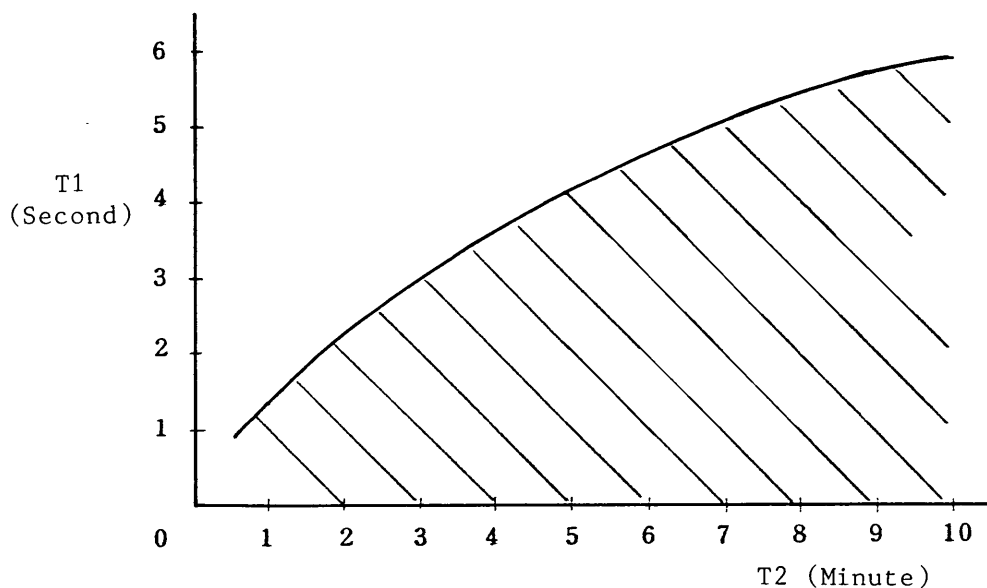
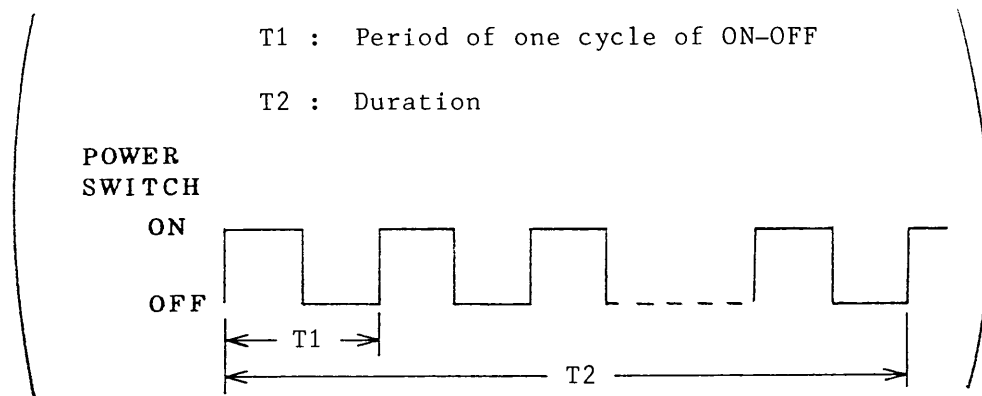
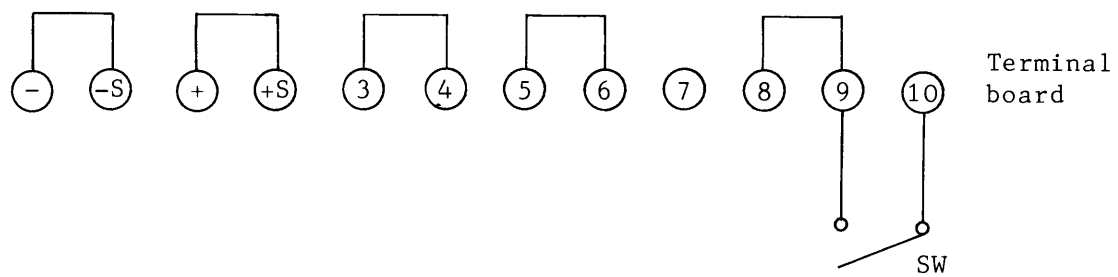


Figure 3





FOR EXAMPLE

ON-OFF control of output for PAD-L TYPE I₃

Figure 4